



## Long Road Racing

2668 Peachtree Road ▪ Statesville, NC 28625 ▪ Phone: 980-223-8547

Since 2001

LongRoadRacing.com

# Global MX-5 Cup Car Technical Service Bulletin #5-10.1-16

## Stock Engine bracket replacement and addition of differential bushing inserts

**Effective May 10, 2016**

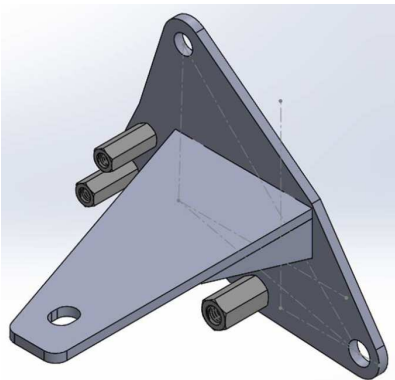
**No cost to competitors – parts update**

### Purpose for this TSB:

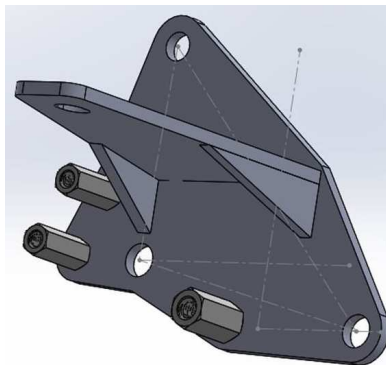
- 1) Provide an update on the stock engine bracket – mandatory installation for GMX-5 competition, highly suggested for all others uses.
- 2) Addition of differential bushing inserts

During the races at the Mazda Raceway Laguna Seca event, we saw several cars who had contact with other cars or track barriers, and cracked both engine brackets.


We have designed a set of replacement engine mounts that are designed for racing applications and will withstand minor contact. (Sample images below) and will also add differential bushing inserts to help stabilize the drive train.



Motor mount drawings



Differential bushing insert



Our plan to distribute the new motor mounts and bushing inserts via the follow schedule:

**1. GMX-5 Competitors at WGI**

- a. You will receive a replacement motor brackets and differential bushing inserts the evening of May 11. Please have them installed prior to the qualifying session

**2. GMX-5 Customers who will not be at WGI**

- a. Long road Racing will be sending you both engine brackets, inserts and installation instructions on May 23<sup>rd</sup>.

If you have any questions about this Technical Bulletin, please contact Glenn Long at:

[GLENN@LongRoadRacing.COM](mailto:GLENN@LongRoadRacing.COM) or 919-614-4797