



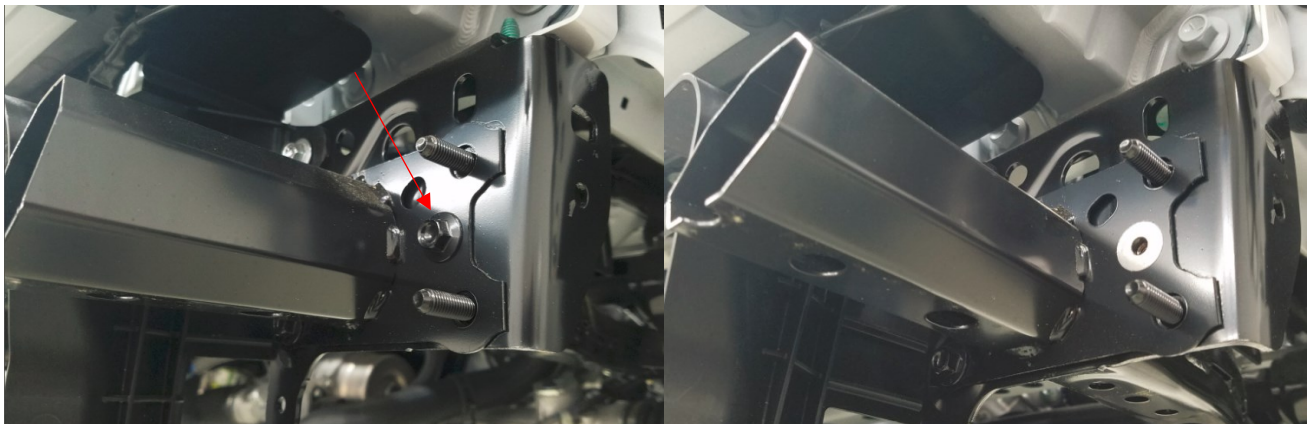
Global MX-5 Cup ND Front Fascia Support Installation Instructions

1.0 General:

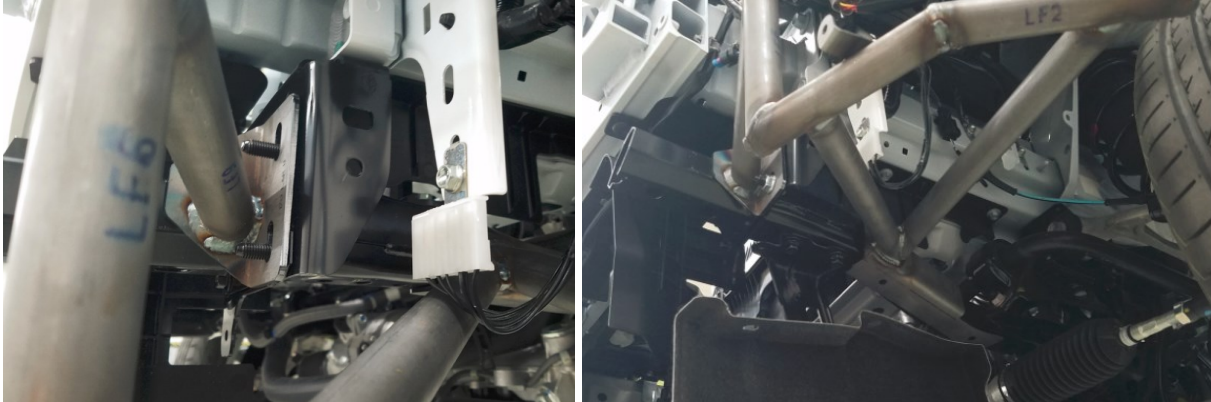
- 1.1 Safety: Follow all industry standard safety procedures.
- 1.2 This Guide is intended to be used for installation of Long Road Racing's Front Fascia Support Braces, Part # 0000-07-5810-RF and 0000-07-5811-LF, in a complete Global MX-5 Cup Race car as built by Long Road Racing from the Mazda MX-5 ND Chassis.
- 1.3 Thread Locker: All fasteners are to be installed using Medium Strength Thread Locker unless otherwise directed in the instructions below. Ny-lock nuts, and screws going into the plastic fascia do not require thread locker.
- 1.4 Basic Installation Overview and Notes:
 - 1.4.1 The Front Fascia Support attaches to the studs on the front frame horn extenders and existing M6 bungs on the bottom of the front sub frame. The Fascia attaches to the Fascia Support.
 - 1.4.2 All fender liners can be reinstalled after the Fascia Supports are installed.
- 1.5 Tools Required: Ratchet, extension, 10mm socket, 13mm deep-well socket, Phillips and Slotted Screw Drivers.
- 1.6 Materials:
 - 1.6.1 Front Fascia Supports (0000-07-5810-RF, or 0000-07-5811-LF) include:
 - (1pcs) Fascia Support
 - (2pcs) M6x1.0x16 Flange Screw
 - (2pcs) M8x1.25 Flange nut
 - (4pcs) #12, 5/8" Phillips Screw, Mazda Motorsports Part # 99865-0516.
- 1.7 Updates: Check www.LongRoadRacing.com for updates made to installation instructions.

2.0 Front Fascia Support Installation

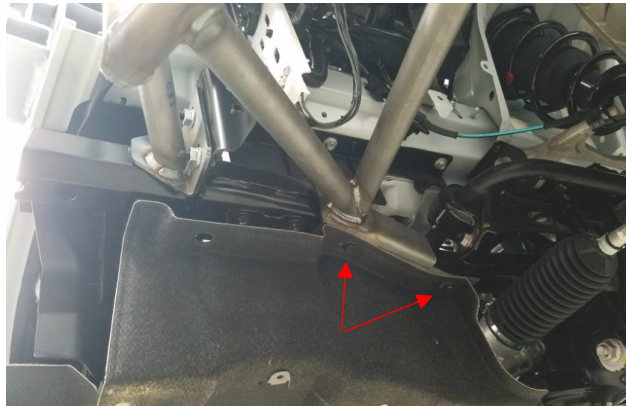
- 2.1 Notes:
 - 2.1.1 Left Front and Right Front are symmetrical, pictures of the Left front are shown.
 - 2.1.2 Recommended to start all fasteners before fully tightening.
- 2.2 Remove Front bumper cover, fender liners and under-tray.
- 2.3 Remove bolt shown below from Frame Horn Extension.



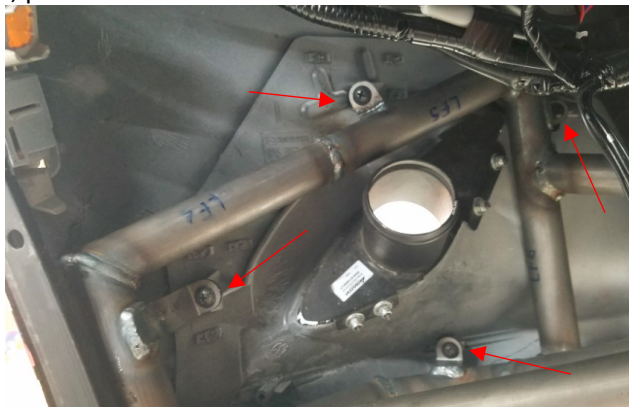
- 2.4 Install Fascia Support Bracket over studs on frame horn, line studs up with the bottom of the slots in the Fascia Support and install two M8x1.25 Flange Nuts (14ft-lbs).



- 2.5 Install two M6x1x16 Flange Bolts (7ft-lbs) securing the under-tray and Fascia Support together to the subframe.



- 2.6 Repeat steps 2.3 through 2.5 for opposite corner, then reinstall Front Bumper Cover over Fascia Supports.
- 2.7 Install four #12 Phillips head screws 5/8" through the Fascia Support tabs to secure the fascia to the Support.
- 2.7.1 If front Fender Liners are being ran, these connections are not required to locate the fascia.
- 2.7.2 Four #12 Phillips head screws are provided, additional screws can be purchased from Mazda Motorsports, part # Part # 99865-0516.



- 2.8 Fully tighten all fasteners.
- 2.9 Reinstall Fender Liner, optional if fascia is attached directly to fascia support bracket. It is recommended to run fender liners to protect the wiring harness etc.